



Photomontage view from Marston Church Path. (72 degrees horizontal field of view, 64 cm viewing distance). ** Refer to the note at the bottom of the Development Parameters Plan for a description of the development envelope.

Viewpoint 8



Photomontage view from Picnic Area Lidlington. (72 degrees horizontal field of view, 64 cm viewing distance). ** Refer to the note at the bottom of the Development Parameters Plan for a description of the development envelope.

Viewpoint 11



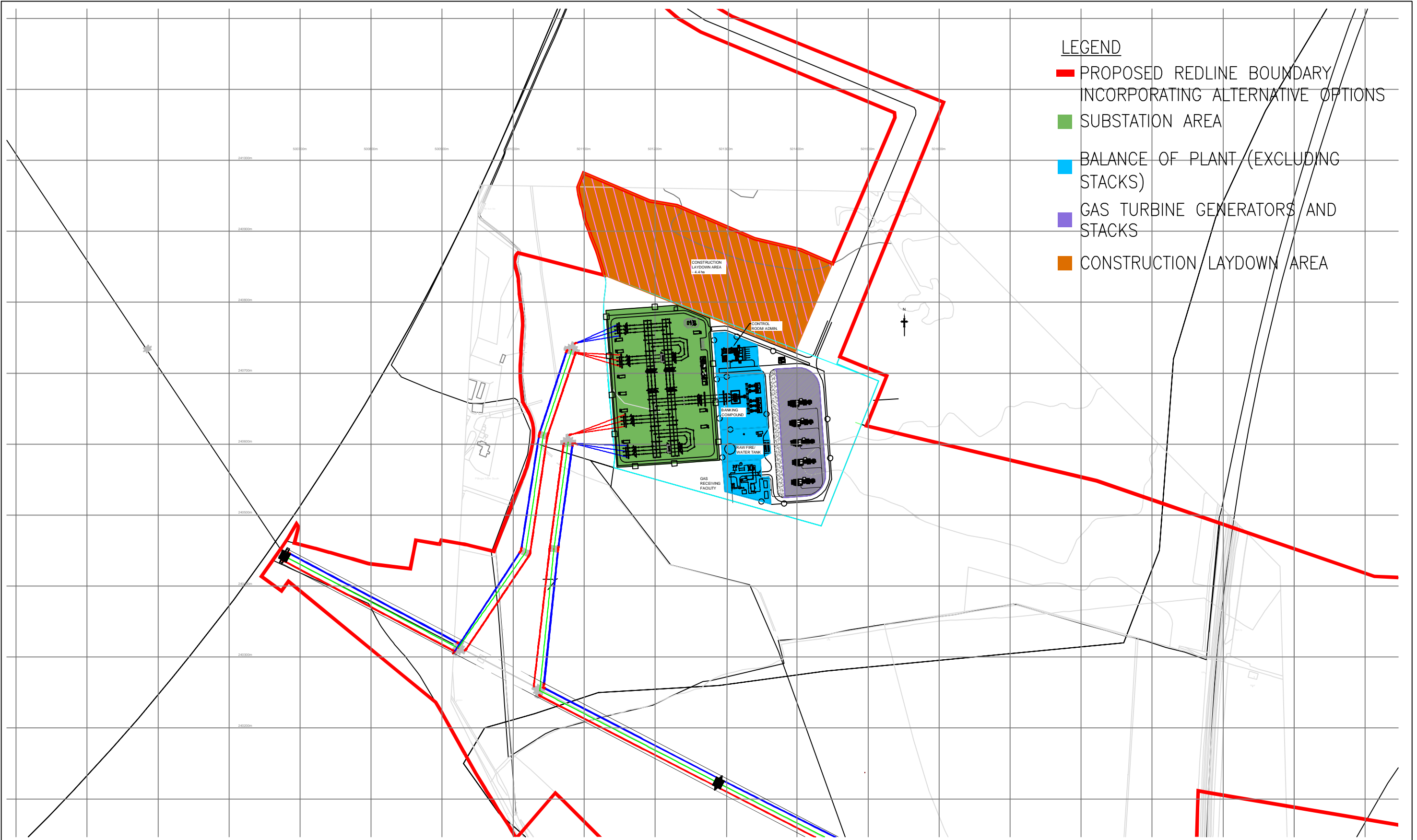
Photomontage view from Country Park Access. (144 degrees horizontal field of view, 64 cm viewing distance). ** Refer to the note at the bottom of the Development Parameters Plan for a description of the development envelope.

Viewpoint 6a

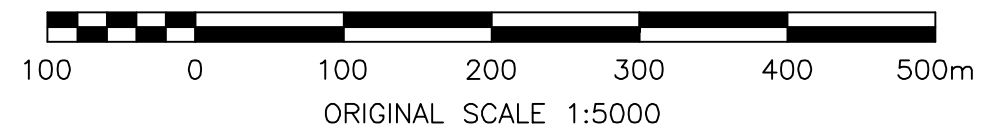


Photomontage view from Footpath Option Land. (144 degrees horizontal field of view, 64 cm viewing distance). ** Refer to the note at the bottom of the Development Parameters Plan for a description of the development envelope.

Viewpoint 14



- LEGEND**
- PROPOSED REDLINE BOUNDARY INCORPORATING ALTERNATIVE OPTIONS
 - SUBSTATION AREA
 - BALANCE OF PLANT (EXCLUDING STACKS)
 - GAS TURBINE GENERATORS AND STACKS
 - CONSTRUCTION LAYDOWN AREA



Rev	Date	Description	By	Chk	App	Notes
A-P1	02/10/2014	FIRST ISSUE	DGC	RAB	WEH	

PARSONS BRINCKERHOFF

Westbrook Mills
 Godalming
 Surrey GU7 2AZ

Tel: 44-(0)1483-528400
 Fax: 44-(0)1483-528989

Client:

Project:

Title:

FIGURE 2.1 INDICATIVE ILLUSTRATION OF THE POSITION AND LAYOUT OF GENERATING EQUIPMENT, ELECTRICAL CONNECTION AND LAYDOWN AREA

INDICATIVE			
Drawn: DGC	Checked: RAB		
Designed: RAB	Approved: WEH		
Date: 02/10/2014	Scale: AS SHOWN	A3	Sheet: 1 OF 1
Project Number: 287533A	Drawing Number: PBP-G-0006A-P1	Revision:	
© Copyright Parsons Brinckerhoff			

Reproduced from Ordnance Survey digital terrain height data © Crown Copyright 2014. All rights reserved. Licence Number 0100031673.



Existing baseline view from Country Park Access. (144 degrees horizontal field of view, 64 cm viewing distance). View direction 88 degrees.

Camera: Canon EOS 5D Mark II Focal Length: 50mm Camera Height: 1.5m Date: 20/08/14 Time: 15:25



Photomontage view from Country Park Access. (144 degrees horizontal field of view, 64 cm viewing distance). ** Refer to the note at the bottom of the Development Parameters Plan for a description of the development envelope.

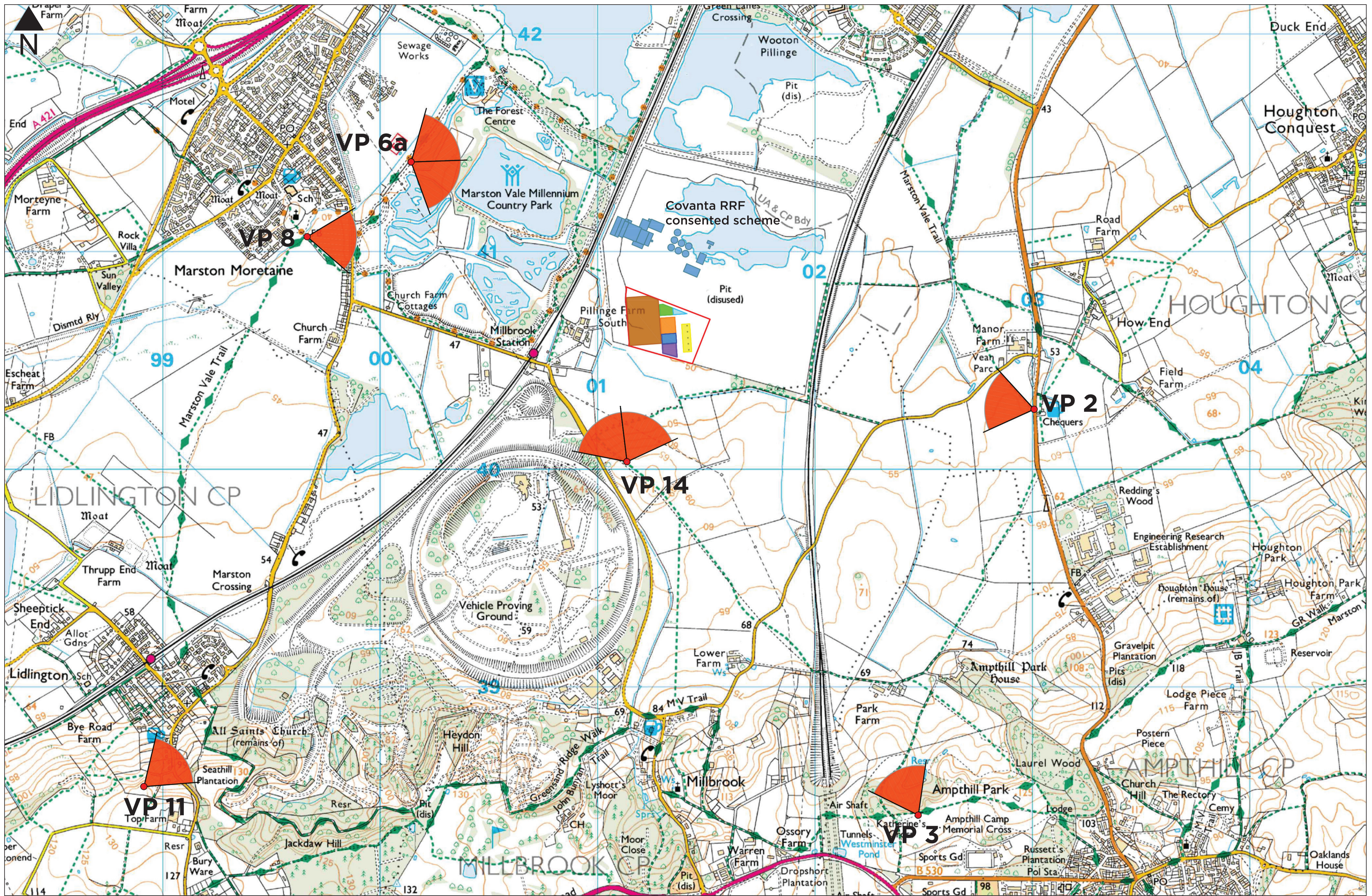


Existing baseline view from Footpath Option Land. (144 degrees horizontal field of view, 64 cm viewing distance). View direction 353 degrees.

Camera: Canon EOS 5D Mark II Focal Length: 50mm Camera Height: 1.5m Date: 21/08/14 Time: 07:58



Photomontage view from Footpath Option Land. (144 degrees horizontal field of view, 64 cm viewing distance). ** Refer to the note at the bottom of the Development Parameters Plan for a description of the development envelope.

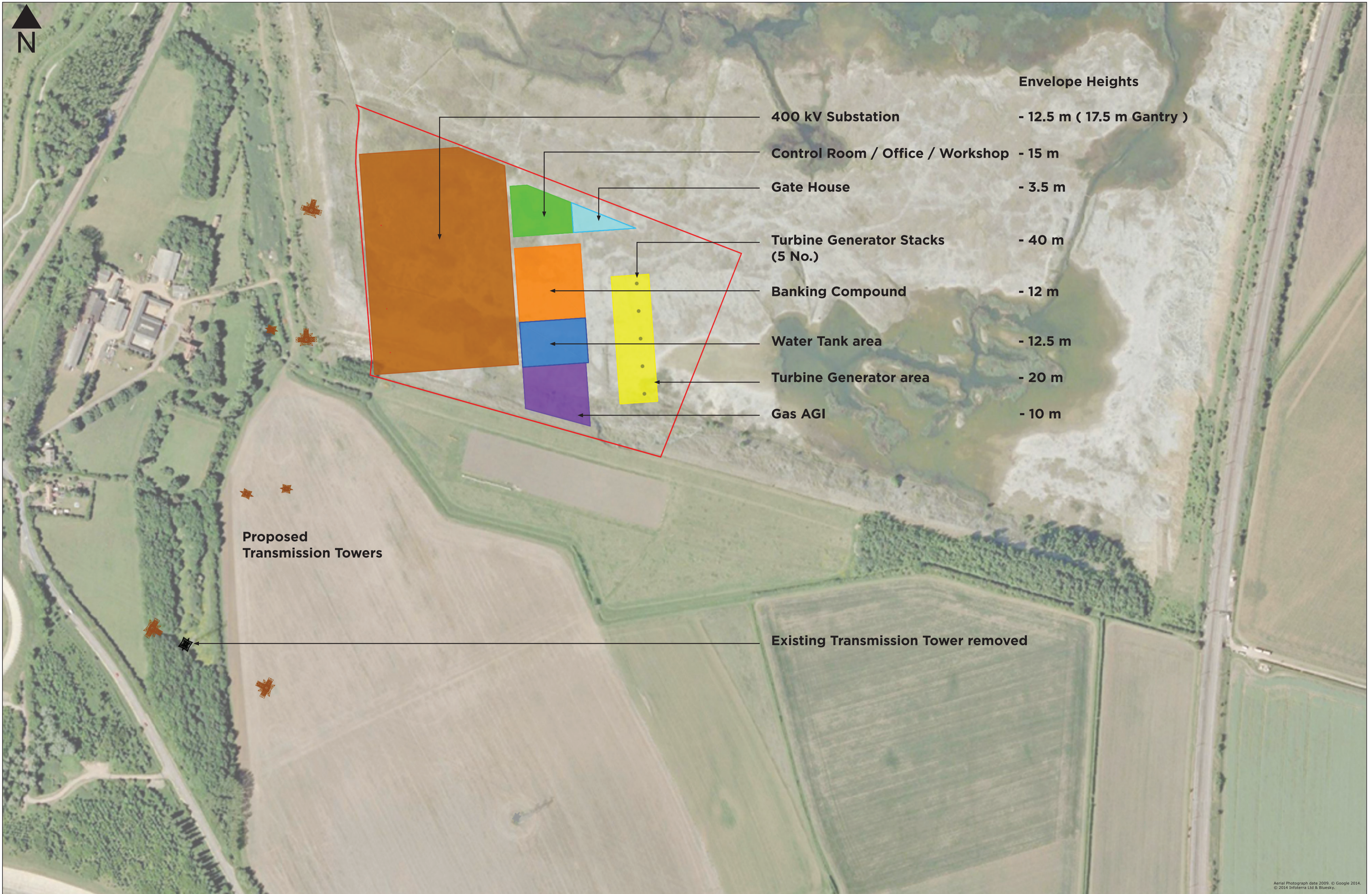


0 300 600 900m
1:15,000

Viewpoints:-

- 2. Footpath by Chequers Pub.
- 3. Amphill Park, Katherine's Cross.
- 6a. Country Park access.
- 8. Marston Church Path.
- 11. Picnic Area Lidlington.
- 14. Footpath Option Land.



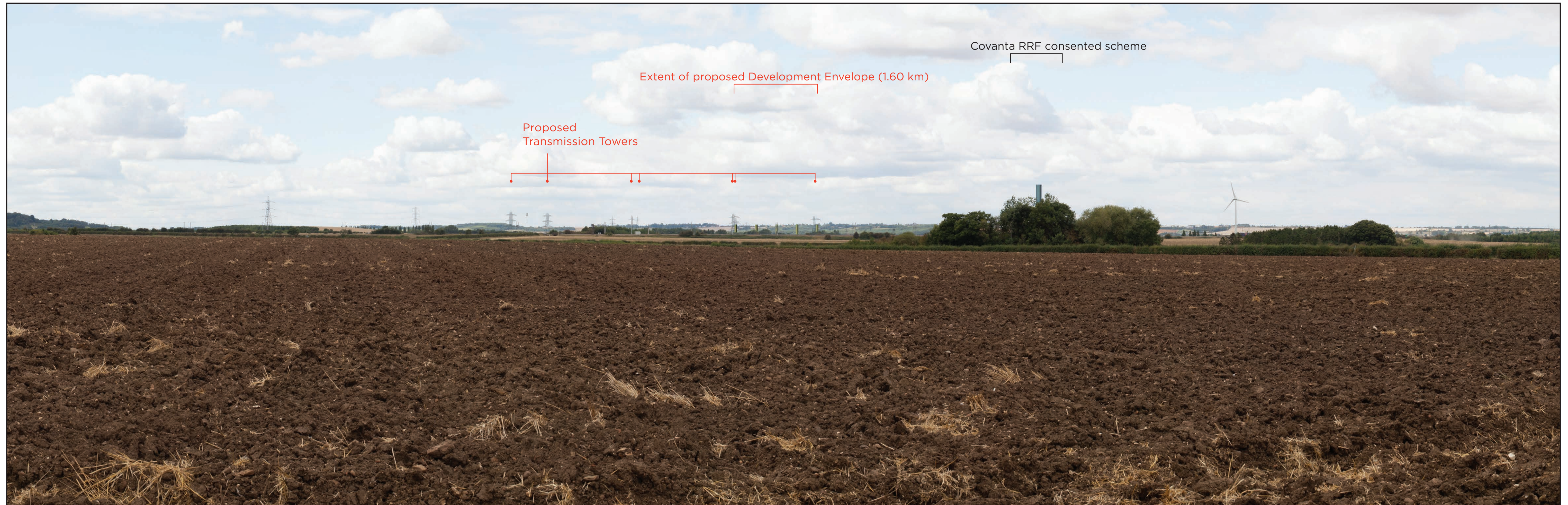


****Note :** A layout of the gas processing plant has been modelled using several coloured 'development envelopes' related to the height, width and depth of each part of the plant (shown in the plan above). The envelopes are modelled at the maximum height of the structures or buildings within each area and therefore represent a worse case scenario, showing the area in which development of the gas processing structures will be built. Indicative wireline models of the proposed transmission towers are shown and a 3D model of the Covanta RRF consented scheme is included in the photomontages. Areas with taller stacks have been modelled with cylinders rising out of the development blocks in order to illustrate the proposed position of the turbine generator stacks. These envelopes have been used as the basis for visual modelling in the photomontages and the assessment of impacts. Colours are used to illustrate the different development envelopes and are not indicative of the colour of the plant. The actual colours of gas processing plant and buildings will be agreed with the Local Planning Authority to help minimise the visual impact of the development. Photomontages do not illustrate any planting which may be incorporated to further reduce the visibility of the Project..



Existing baseline view from footpath by Chequers Pub. (72 degrees horizontal field of view, 64 cm viewing distance). View direction 282 degrees.

Camera: Canon EOS 5D Mark II Focal Length: 50mm Camera Height: 1.5m Date: 20/08/14 Time: 11:45



Photomontage view from footpath by Chequers Pub. (72 degrees horizontal field of view, 64 cm viewing distance). ** Refer to the note at the bottom of the Development Parameters Plan for a description of the development envelope.



Existing baseline view from Ampthill Park, Katherine's Cross. (72 degrees horizontal field of view, 64 cm viewing distance). View direction 332 degrees., Camera: Canon EOS 5D Mark II Focal Length: 50mm Camera Height: 1.5m Date: 20/08/14 Time: 13:38



Photomontage view from Ampthill Park, Katherine's Cross. (72 degrees horizontal field of view, 64 cm viewing distance). ** Refer to the note at the bottom of the Development Parameters Plan for a description of the development envelope.



Existing Marston Vale Wind Turbine

Existing Transmission Tower removed

Existing baseline view from Marston Church Path. (72 degrees horizontal field of view, 64 cm viewing distance). View direction 95 degrees.

Camera: Canon EOS 5D Mark II Focal Length: 50mm Camera Height: 1.5m Date: 21/08/14 Time: 09:11



Covanta RRF consented scheme

No visibility of proposed Development Envelope (1.50 km)

Proposed Transmission Towers

Photomontage view from Marston Church Path. (72 degrees horizontal field of view, 64 cm viewing distance). ** Refer to the note at the bottom of the Development Parameters Plan for a description of the development envelope.



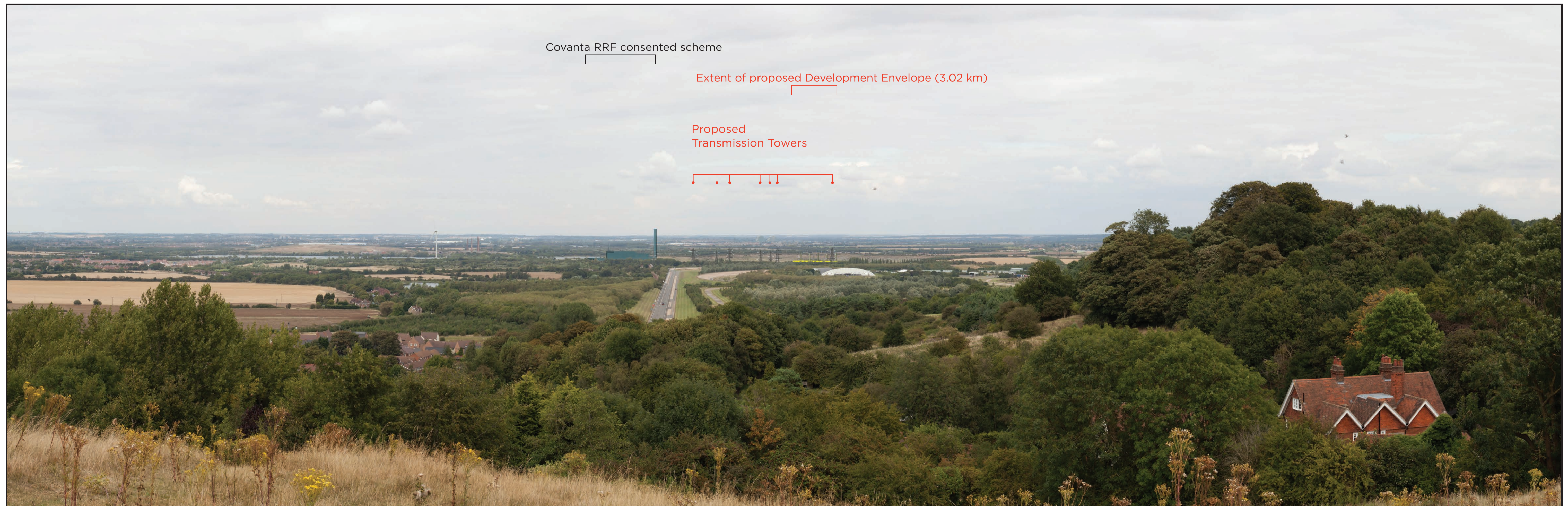
Existing Marston Vale Wind Turbine

Existing Transmission Tower removed

Stewartby

Existing baseline view from Picnic Area Lidlington. (72 degrees horizontal field of view, 64 cm viewing distance). View direction 49 degrees.

Camera: Canon EOS 5D Mark II Focal Length: 50mm Camera Height: 1.5m Date: 20/08/14 Time: 14:27



Covanta RRF consented scheme

Extent of proposed Development Envelope (3.02 km)

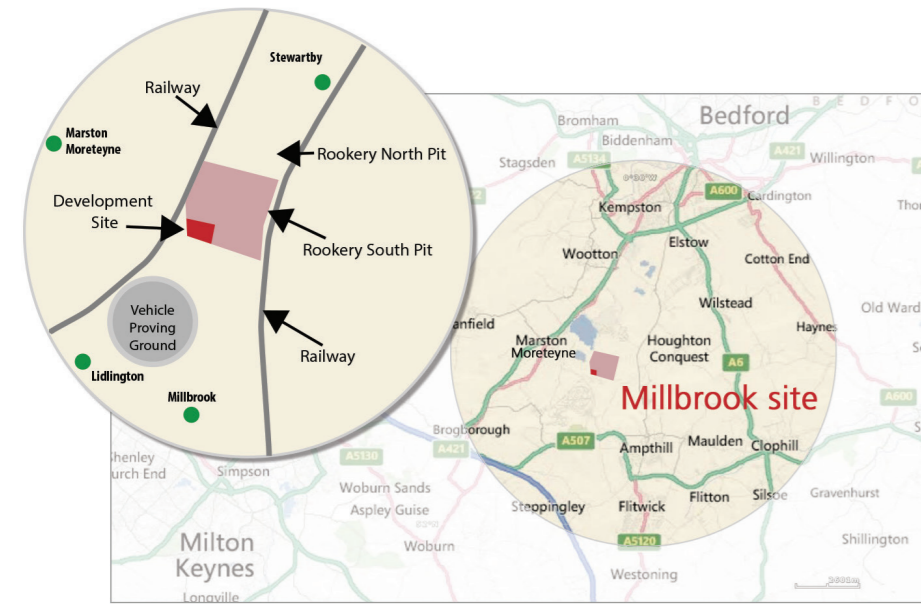
Proposed Transmission Towers

Photomontage view from Picnic Area Lidlington. (72 degrees horizontal field of view, 64 cm viewing distance). ** Refer to the note at the bottom of the Development Parameters Plan for a description of the development envelope.

Appendix 3.Y: Phase 1 Section 47 - Statutory Consultation Exhibition material

3.Y(iii) Leaflet

The Project



Millbrook Power Limited (MPL) proposes to develop a gas-fired electricity generation project on land located in Rookery South Pit, near the villages of Stewartby, Millbrook, Lidlington and Marston Moretaine in Bedfordshire. It will include a Power Generation Plant and connections to the existing nearby electricity and gas networks (the Project). The Project would have a rated electrical output of up to 299 MW.

Who is Millbrook Power?

www.millbrookpower.co.uk

MPL is an energy development company established for the Millbrook Power project by Watt Power Limited. Watt Power wishes to develop a gas-fired power plant at Millbrook, as well as other locations across the UK, to support the UK Government's drive to a low carbon economy.

Planning & Public Consultation

The Project is classified as a Nationally Significant Infrastructure Project, which means that a Development Consent Order (DCO) is required to build, operate and maintain it. The DCO application will be processed and examined by the Planning Inspectorate and the final decision on the application will be made by the Secretary of State for Energy & Climate Change. The electrical and gas connections are integral to the Project and will be considered together with the Power Generation Plant under the DCO application.

A phase of statutory consultation started on 13th October and will end on 16th November. This gives you an opportunity to comment on the Project. Consultation with local people, businesses and organisations is an essential part of the DCO process and will help to influence the final designs of the Project.

MPL first shared its initial plans with local residents and businesses in June 2014 through the local media, information leaflets, non-statutory exhibitions held at Lidlington, Stewartby and Marston Moretaine and via the internet and social media. Since June, MPL has responded to and acted upon all feedback received.

Several significant changes have occurred since June including:

- a reduction in the maximum height of the stacks;
- a narrowing of the gas connection opportunity area into two route corridors with a preferred connection route;
- refinement of the electrical connection opportunity area;
- generating equipment has been arranged to reduce the impact of noise for nearby homes.

Additionally, MPL has undertaken detailed technical and environmental studies, and associated design work to refine the design of the plant – this work is on-going.

MPL is liaising closely with Central Bedfordshire Council (CBC) and Bedford Borough Council (BBC). It is also engaging with the Parish Councils in the area as well as organisations such as the Environment Agency, Natural England and English Heritage, to ensure that the plant will be designed, built, operated and maintained to the highest relevant and current safety and environmental standards.

For the purposes of pre-application consultation, MPL has prepared a Preliminary Environmental Information Report (PEIR) and a non-technical summary of this report. These documents are described in more detail in the section on “Environment”.

For more information about the DCO Application Process, please visit the Planning Inspectorate's website: <http://infrastructure.planningportal.gov.uk>.

The Need For Gas Generation

Gas is a reliable fuel source. It is acknowledged by the Government as being essential to a low-carbon economy and to underpin the country's energy security. Government Policy states that “gas will continue to play an important role in the electricity sector – providing vital flexibility to support an increasing amount of low-carbon generation and to maintain security of supply” [NPS EN-1 (Energy)].

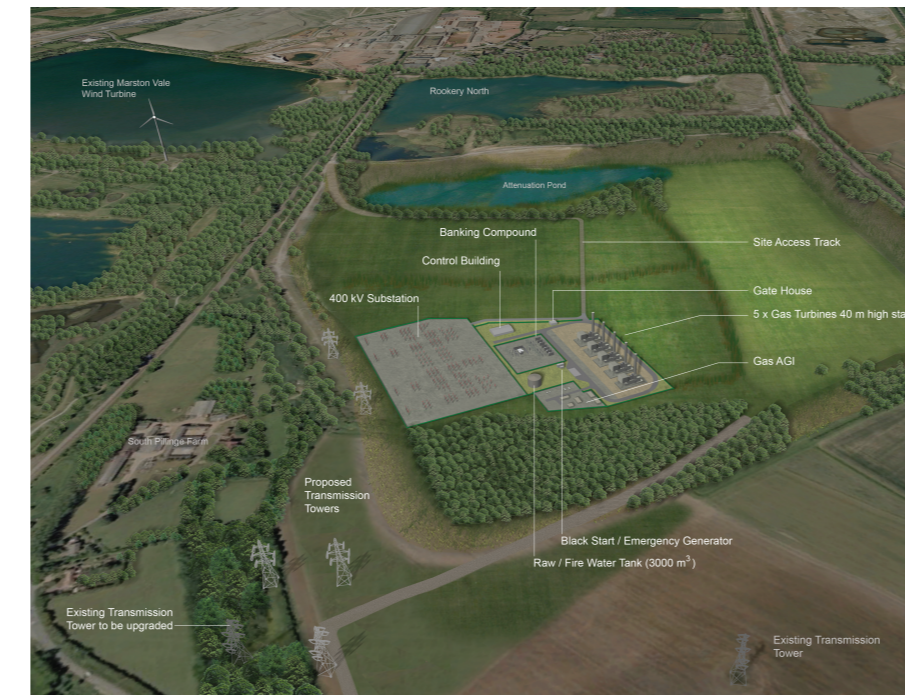
Faced with UK-wide closures of many ageing coal and nuclear plants, investment in reliable, low carbon technology is needed. In addition, gas provides back-up to power generation from renewable sources, particularly wind power – which is an increasingly prevalent but intermittent energy source. Modern gas-fired power plants are among the most efficient and cleanest forms of electricity power generation.

The need for the Project is established through government policy and is not a topic for consultation.

Why Rookery South Pit?

It has three advantages:

1. Proximity to the national gas and electricity transmission networks
2. National Grid encourages new power generation development in the region
3. Rookery South Pit is classified as brownfield land and is allocated by CBC for development



Illustrative visual of the five unit Power Generation Plant and electrical connection. If fewer units are required, they may be larger, though this will not impact the maximum stack height, which is 40 m. Additional visuals will be available at the exhibitions and in other consultation materials.

The Project's Key Details

The key details of the proposed Project are:

- the construction, operation and maintenance of a Simple Cycle Gas Turbine Power Generation Plant with a rated electrical output of up to 299 MW of electricity;
- the Power Generation Plant will produce electricity from natural gas;
- it is designed to provide flexible back-up generation capacity, which can respond quickly and efficiently to both short-term variation in customer demand and intermittent output from renewable power generation;
- it is anticipated that it will operate for no more than 1500 hours per year;
- the Power Generation Plant will have up to five stacks, each up to 40 m in height;
- the site for the generating equipment and substation covers an area of approximately 8 ha and is located within Rookery South Pit itself;
- the proposed Project includes the construction, operation and maintenance of a new electrical connection together with a new substation to connect the power generation plant to the existing overhead power line nearby;
- the layout of the electrical connection is yet to be finalised but an area within which the connection will be sited has been identified;
- a realistic worst case scenario of up to two overhead line double circuits [of 400 kV] (including up to six towers) has been assumed (and is being environmentally assessed); however MPL will continue to work with National Grid on the indicative design of the connection over the coming months;
- the proposed Project also includes the construction of a new underground pipeline to bring natural gas to the power generating plant from the National Gas Transmission System located nearby;
- at this stage, two gas connection route corridors have been identified with a preferred connection route within one of them;
- the plant could enter commercial operation in 2019/20, subject to public consultation, planning and financing;

Continued consultation and environmental assessment on the connection route options and possible electrical connection is required before each can be confirmed. In addition, although a preliminary preferred layout of the Power Generation Plant has been identified, the final location and layout are yet to be determined.

Freepost Response Form

(Please complete in BLOCK CAPITALS)

Please post free of charge by 16th November 2014 to Millbrook Power Ltd via Freepost RTEY-JYYB-ERSR, Millbrook Power Ltd, 49 York Place, Edinburgh, EH1 3JD.

Name:

Address:

Email:

I plan to attend the following exhibition events:

Marston Moretaine Village Hall Stewartby Village Hall

Amphill Masonic Centre Lidlington Village Hall

Did you comment during the initial phase of consultation?

Yes No, I wasn't aware of the Project

No, I didn't comment for another reason

We have since taken into account further information and prepared a Preliminary Environmental Information Report that identifies potential benefits and impacts. Do you have any comments on our findings?

.....

If you have any comments about the Project, including the options for the gas connection route and the electrical connection or any other aspect of the Project, please share below.

.....

How do you feel about this proposal to build the Project?

Supportive Neutral

Opposed Undecided

If you wish to provide further comment about the Project, please continue on additional sheets and forward to the freepost address or contact us via our email address info@millbrookpower.co.uk. Thank you.

Community Benefits

This £200m Project would be a substantial investment in the area and would deliver significant economic benefits for a period of at least 25 years

- creation of around 150 jobs during a 2 year construction period;
- creation of up to 15 permanent skilled jobs for on-going operation and maintenance of the facility;
- potential business opportunities for local suppliers.

MPL will consult CBC and BBC on ways to bring wider social and environmental benefits to the surrounding area.

Environment

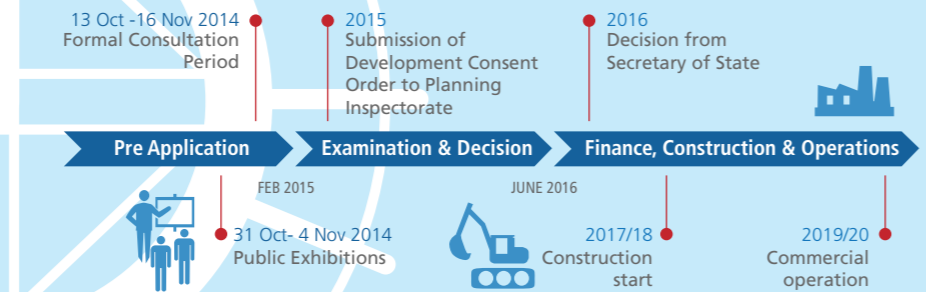
MPL's steps to mitigate the impact of the Project on the local environment, during its construction, operation and maintenance, are a major part of the consultation and planning process.

Due to the nature and size of the Project, MPL is undertaking an Environmental Impact Assessment (EIA). The EIA considers the potential positive and negative impacts of the Project and MPL has published its interim findings in the PEIR. These findings indicate the following key potential impacts, all of which will be mitigated through the final design process:

- transport - potential impact to the local road network from traffic associated with the construction and decommissioning periods;
- air quality and emissions – potential impact resulting from construction activities, and during operation of the Power Generation Plant;
- noise – potential increase in background noise during construction and operation within the vicinity of the site;
- visual impact and effects on cultural heritage setting – introduction of up to five 40 m stacks and up to six transmission towers into the local landscape;
- local ecology – no anticipated negative impacts, but opportunities to improve local habitat through additional planting.

The PEIR, along with the non-technical summary, are available to view at the locations listed in the 'Get In Touch' section. These documents can also be viewed on the Millbrook Power website.

Key Milestones



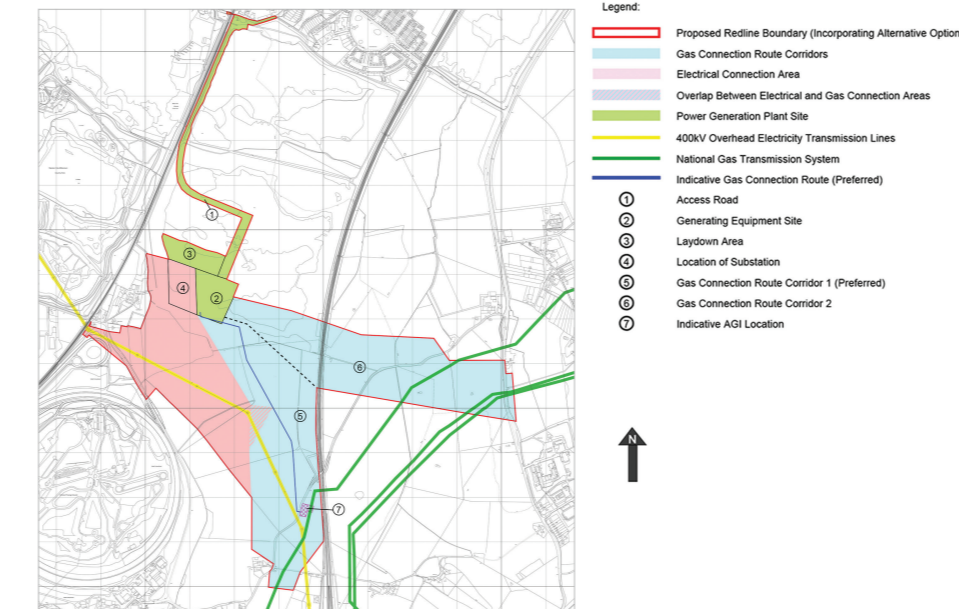
Your Views?

MPL would like your views on:

- the layout of the Power Generation Plant within the Project Site;
- route option(s) for accessing the gas and electricity connection infrastructure during construction and maintenance;
- the preferred route option for the gas connection;
- the proposed electrical connection;
- the findings of the preliminary assessment on the likely significant environmental effects of the Project during construction and operation, as set out in the PEIR.

MPL will do this via a number of ways:

- freepost feedback form attached to this leaflet;
- series of exhibitions to be held in the local area. Members of the MPL team will be on hand to explain the Project in detail to you;
- an email address, freepost address and telephone number through which you can ask questions or make comments (see 'Get In Touch Section');
- meetings and briefings with local politicians.



Outline Map of the Project

More Information Available

(Opening Times Vary)

- **Bedford Library**, Harpur Street, Bedford, MK40 1PG, Tel. 01234 718178
- **Amphill Library**, 1 Dunstable Street, Amphill, MK45 2NL, Tel. 0300 300 8053
- **Wootton Library**, Lorraine Road, Wootton, MK43 9LH, Tel. 01234 766061
- **Bedford Borough Council**, Borough Hall, Cauldwell St, Bedford MK42 9AP, www.bedford.gov.uk, Tel. 01234 267422
- **Central Bedfordshire Council**, Priory House, Monks Walk, Chicksands, Shefford, Bedfordshire, SG17 5TQ, www.centralbedfordshire.gov.uk, Tel. 0300 300 8301
- **Marston Vale Forest Centre**, Marston Moretaine, MK43 0PR, www.marstonvale.org/forest-centre-3, Tel. 01234 767037

Exhibitions In The Local Area

- **Friday 31st October, 1500-1900**
Marston Moretaine Village Hall, Bedford Road, Marston Moretaine, MK43 0LD
- **Saturday 1st November, 0900-1300**
Stewartby Village Hall, Stewartby Way, Stewartby, MK43 9LX
- **Monday 3rd November, 1600-2000**
Amphill Masonic Centre, Old Court House, Church Street, Amphill, MK45 2PL
- **Tuesday 4th November, 1100-1500**
Lidlington Village Hall, High Street, Lidlington, MK43 0RT

How To Get In Touch

This consultation will end on 16th November 2014, and we would welcome your views on or before this date. Please include your name and address. Responses may be made public, subject to data protection laws.

Website: www.millbrookpower.co.uk

Email: info@millbrookpower.co.uk

Telephone: 0131 550 3380

Freepost: Freepost RTEY-JYYB-ERSR, Millbrook Power Ltd, 49 York Place, Edinburgh, EH1 3JD

This leaflet, upon request can be made available in larger print format, braille and other languages.



A proposal to build a gas-fired power station by Millbrook Power

FREEPOST RTEY-JYYB-ERSR
 Millbrook Power Ltd,
 49 York Place,
 Edinburgh, EH1 3JD

Appendix 3.Y: Phase 1 Section 47 - Statutory Consultation Exhibition material

3.Y(iv) Feedback form



Proposed power station at Rookery South Pit: Feedback Form

Thank you for taking the time to visit our exhibition today. Your views on our project are important to us so we would be grateful if you could spare a few moments to complete this feedback form.

Please put your completed form in the box provided or post it free of charge **by 16th November 2014** to Millbrook Power Ltd via **Freepost RTEY-JYYB-ERSR, Millbrook Power Ltd, 49 York Place, Edinburgh, EH1 3JD.**

Please complete in BLOCK CAPITALS and continue overleaf if necessary.

Name: _____

Address: _____

Email: _____

I attended the following exhibition event:

Marston Moretaine Village Hall

Stewartby Village Hall

Amphill Masonic Centre

Amphill Masonic Centre

Did you comment during the previous phase of consultation?

Yes No, I wasn't aware of the Project No, I didn't comment for another reason

We have since taken into account further information and prepared a Preliminary Environmental Information Report that identifies potential benefits and impact. Do you have any comments on our findings?

If you have any comments about our Project, including the options for the gas connection route and the electrical connection, or any other aspect of the Project, please share below.

How do you feel about this proposal to build the Project?

Supportive Neutral Opposed Undecided

For more information, please go to www.millbrookpower.co.uk

If you wish to provide further comment about the Project, please continue on additional sheets and forward to the freepost address or contact us via our email address info@millbrookpower.co.uk. Thank you.

